

# William Shakespeare

The Seven Ages of Bill Shakespeare's life

# Biography

# Biography

- Born April 23, 1564 in Statford-upon-Avon, England

# Biography

- Born April 23, 1564 in Stratford-upon-Avon, England
- Died April 23, 1616

# Biography

- Born April 23, 1564 in Statford-upon-Avon, England
- Died April 23, 1616
- In 1582, Married Anne Hathaway and had three children.

# Biography

- Born April 23, 1564 in Stratford-upon-Avon, England
- Died April 23, 1616
- In 1582, Married Anne Hathaway and had three children.
- In 1592, Shakespeare emerged as a playwright

# The Globe Theatre



Modern-day Globe  
Theatre exterior

# The Globe Theatre

- In 1599, Shakespeare began to write plays for the newly opened Globe Theatre in London



Modern-day Globe  
Theatre exterior



# The Globe Theatre

- In 1599, Shakespeare began to write plays for the newly opened Globe Theatre in London
- Shakespeare worked as a writer and an actor at the theater.



Modern-day Globe Theatre exterior

# The Globe Theatre

- In 1599, Shakespeare began to write plays for the newly opened Globe Theatre in London
- Shakespeare worked as a writer and an actor at the theater.
- Lord Chamberlain's Men was the name of the group that owned the theatre and performed there. (Named after the troupe's benefactor)



Modern-day Globe Theatre exterior



Inside the Globe Theatre



Inside the Globe Theatre

- Destroyed by fire on June 29, 1613



Inside the Globe Theatre

- Destroyed by fire on June 29, 1613
- Rebuilt in June 1614, but closed for good in 1642.



Inside the Globe Theatre

- Destroyed by fire on June 29, 1613
- Rebuilt in June 1614, but closed for good in 1642.
- A replica of the theatre was opened in 1997.

# Elizabethan Theater

- Name of the type of plays that were written between the Reformation and the closure of theatre's in 1642.
- “Elizabethan” refers to Queen Elizabeth I
- Theatre during this period was paid for by noblemen and women.



Known as the “virgin queen,” the colony of Virginia was named after Elizabeth I

# Elizabethan Theatre Continued



# Elizabethan Theatre Continued

- All parts during this period, more properly called the English Renaissance Period, were performed by men.

# Elizabethan Theatre Continued

- All parts during this period, more properly called the English Renaissance Period, were performed by men.
  - Boys played the roles of women.

# Elizabethan Theatre Continued

- All parts during this period, more properly called the English Renaissance Period, were performed by men.
  - Boys played the roles of women.
- Plays written and performed during this period often touched on historical events (Hamlet, Julius Caesar, King Lear) biblical

# Elizabethan Theatre Continued

- All parts during this period, more properly called the English Renaissance Period, were performed by men.
  - Boys played the roles of women.
- Plays written and performed during this period often touched on historical events (Hamlet, Julius Caesar, King Lear) biblical
- One of the only places in London where the rich and poor were sort of “equal”

# Elizabethan Theatre Continued

- All parts during this period, more properly called the English Renaissance Period, were performed by men.
  - Boys played the roles of women.
- Plays written and performed during this period often touched on historical events (Hamlet, Julius Caesar, King Lear) biblical
- One of the only places in London where the rich and poor were sort of “equal”
- Shut down by the Puritans in 1642 because they supposedly encouraged lewd acts

# Shakespeare's plays

# Shakespeare's plays

- Generally speaking, Shakespeare wrote three types of plays

# Shakespeare's plays

- Generally speaking, Shakespeare wrote three types of plays
- Comedies - A play that has a happy ending, usually with the characters marrying. These plays are usually light-hearted.



# Shakespeare's plays

- Generally speaking, Shakespeare wrote three types of plays
  - Comedies - A play that has a happy ending, usually with the characters marrying. These plays are usually light-hearted.
  - Tragedies - Depicts the suffering of usually a flawed individual who usually succumbs (dies) trying to overcome his obstacles.

# Shakespeare's plays

- Generally speaking, Shakespeare wrote three types of plays
  - Comedies - A play that has a happy ending, usually with the characters marrying. These plays are usually light-hearted.
  - Tragedies - Depicts the suffering of usually a flawed individual who usually succumbs (dies) trying to overcome his obstacles.
  - Histories - Plays based on the lives of English kings

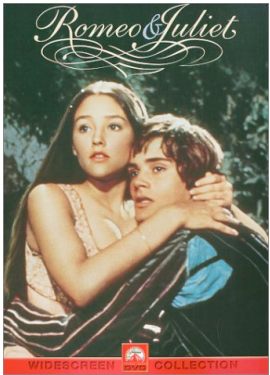
# Romeo and Juliet

Perhaps Shakespeare's most well-known play. It explores the theme of forbidden love.

The many faces of Romeo and Juliet

# Romeo and Juliet

Perhaps Shakespeare's most well-known play. It explores the theme of forbidden love.



The many faces of Romeo and Juliet

# Romeo and Juliet

Perhaps Shakespeare's most well-known play. It explores the theme of forbidden love.



The many faces of Romeo and Juliet



# Romeo and Juliet

Perhaps Shakespeare's most well-known play. It explores the theme of forbidden love.



The many faces of Romeo and Juliet

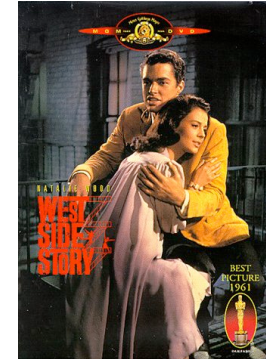


# Romeo and Juliet

Perhaps Shakespeare's most well-known play. It explores the theme of forbidden love.



The many faces of Romeo and Juliet

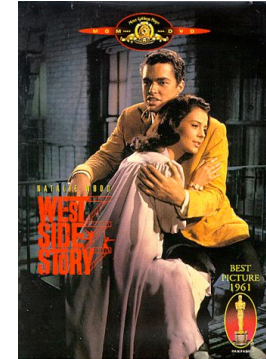


# Romeo and Juliet

Perhaps Shakespeare's most well-known play. It explores the theme of forbidden love.



The many faces of Romeo and Juliet





# Tragedies

# Tragedies

- These are Shakespeare's most studied plays and include:

# Tragedies

- These are Shakespeare's most studied plays and include:
  - Hamlet, Macbeth, Othello, and The Tragedy of Julius Caesar

# Tragedies

- These are Shakespeare's most studied plays and include:
  - Hamlet, Macbeth, Othello, and The Tragedy of Julius Caesar
- Fatal flaws - Each one of these plays will have a character who is admirable, but a flaw leads to his downfall and eventual death.

# Tragedies

- These are Shakespeare's most studied plays and include:
  - Hamlet, Macbeth, Othello, and The Tragedy of Julius Caesar
- Fatal flaws - Each one of these plays will have a character who is admirable, but a flaw leads to his downfall and eventual death.
- Try to determine Romeo's fatal flaw

# Prologue

# Prologue

Tells the audience everything that will unfold. The greatness of this type is that the importance is placed on the storytelling.

# Prologue

Tells the audience everything that will unfold. The greatness of this type is that the importance is placed on the storytelling.

Romeo and Juliet